



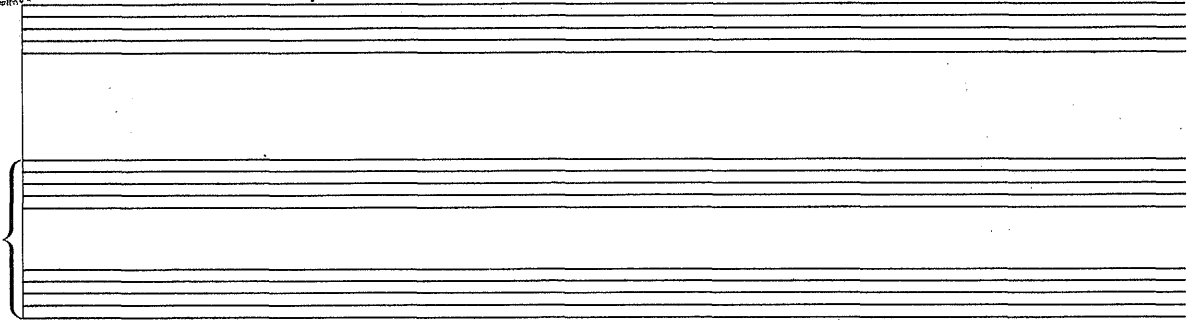
Best.nr.  
E150

Afton.

Ord och musik av Ruth Almqvist.

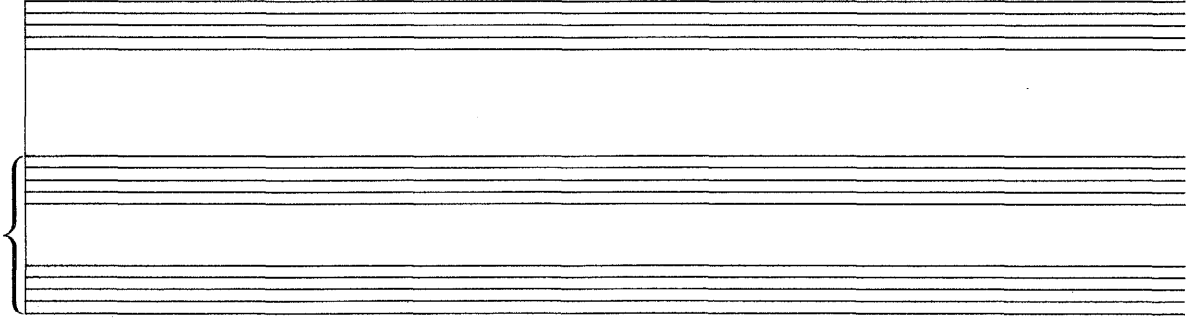
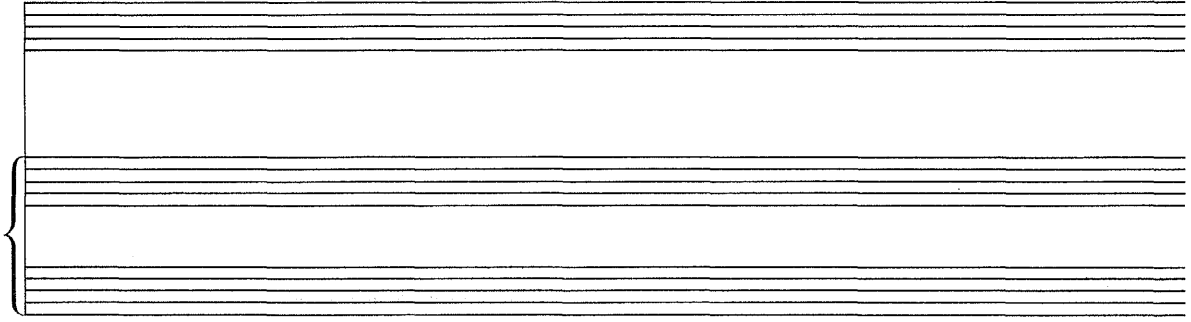


Ruth G. P.  
2/50



Afton.

Ord och musik av Ruth Blucis.



\* 1942 / 449

# Afton.

Ord och musik av  
Ruthe Almén.

*Tranquillo*

Handwritten musical notation for the first system. The vocal line is in treble clef with a key signature of three flats (B-flat, E-flat, A-flat) and a common time signature. The lyrics are: "som när på himlen aftonskyar träda kring". The piano accompaniment is in grand staff (treble and bass clefs) with a key signature of three flats and a common time signature. It features a piano (*p.*) dynamic marking and includes arpeggiated chords and melodic lines.

Handwritten musical notation for the second system. The vocal line continues with the lyrics: "so- - len ofp och liksom händer sträcker att". The piano accompaniment includes a mezzo-forte (*m. f.*) dynamic marking and features a more active melodic line in the right hand.

Handwritten musical notation for the third system. The vocal line continues with the lyrics: "fånga sista strålarne från so- len, så samla sig i livets afton". The piano accompaniment continues with a steady accompaniment pattern.

Handwritten musical notation for the fourth system. The vocal line concludes with the lyrics: "minnen, att i reflexer ännu åt oss fån - - ga vad". The piano accompaniment concludes with sustained chords and a final melodic flourish.

Handwritten musical score for voice and piano. The vocal line is in treble clef with a key signature of two flats (B-flat and E-flat) and a common time signature. The lyrics are: "livet giva kan av sol och fä --- ger." The piano accompaniment is in grand staff (treble and bass clefs) with the same key signature and time signature. The piano part features a complex rhythmic pattern in the left hand and a more melodic line in the right hand. There are some handwritten annotations above the piano part, possibly indicating dynamics or phrasing.

Two systems of empty musical staves. The first system consists of a single treble clef staff. The second system consists of a grand staff (treble and bass clefs). Both systems are currently blank, suggesting they are intended for further notation or are placeholders.

A system of empty musical staves consisting of a grand staff (treble and bass clefs). The staves are blank.

A system of empty musical staves consisting of a grand staff (treble and bass clefs). The staves are blank.