

[Sponger Harmonie an my 1850]

Handwritten musical notation for the first system, featuring a treble clef and a 4/4 time signature. The melody is written on a single staff, and the lyrics "H r n e u v e n u" are written below the staff.

Handwritten musical notation for the second system, featuring a treble clef and a 4/4 time signature. The melody is written on a single staff, and the lyrics "t u t g u d" are written below the staff.

Handwritten musical notation for the third system, featuring a treble clef and a 4/4 time signature. The melody is written on a single staff, and the lyrics "k u d t u v a s y m l e r k" are written below the staff.

Handwritten musical notation for the fourth system, featuring a treble clef and a 4/4 time signature. The melody is written on a single staff, and the lyrics "k u v a s y m l e r k m h e r" are written below the staff.

Handwritten musical notation for the fifth system, featuring a treble clef and a 4/4 time signature. The melody is written on a single staff, and the lyrics "o m n i g a k r i k" are written below the staff.

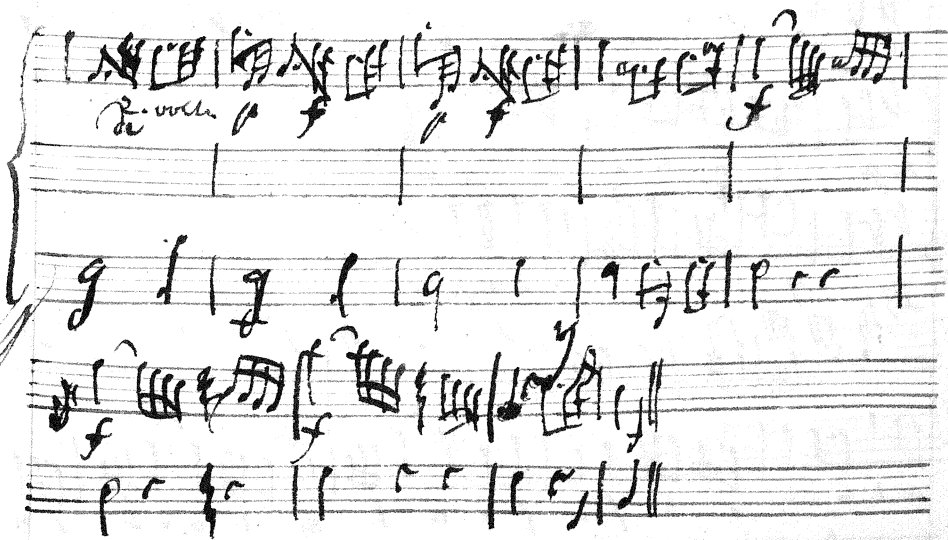
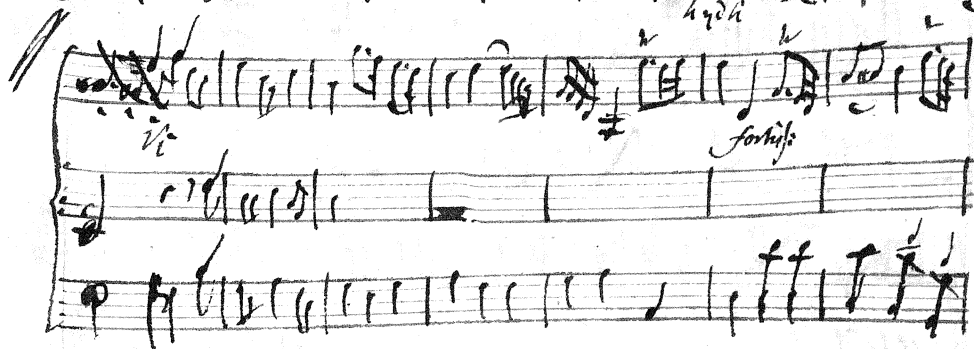
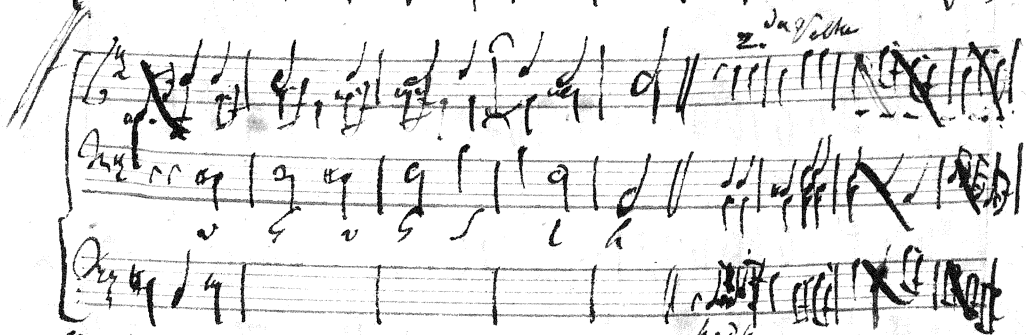
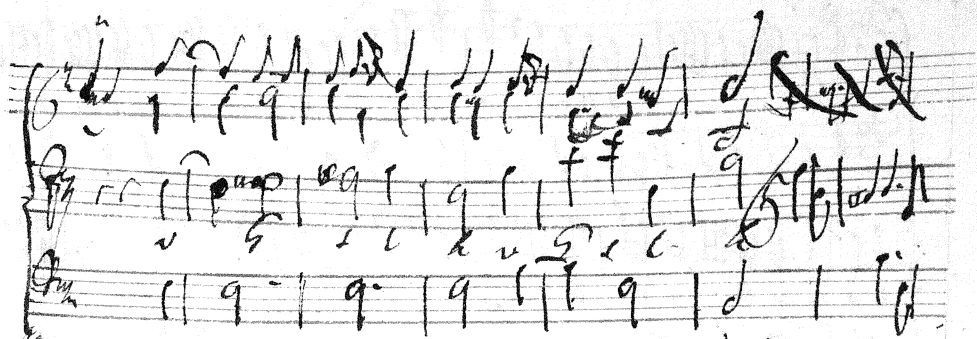
Handwritten musical notation on a three-staff system. The top staff contains a melody with various note values and rests. The middle staff contains a similar melody. The bottom staff contains a bass line with notes and rests. There are some handwritten annotations above the staves.

Handwritten musical notation on a three-staff system. The top staff contains a melody. The middle staff contains a melody with some notes crossed out. The bottom staff contains a bass line. There are some handwritten annotations above the staves.

Handwritten musical notation on a three-staff system. The top staff contains a melody with some notes crossed out. The middle staff contains a melody. The bottom staff contains a bass line. There are some handwritten annotations above the staves.

Handwritten musical notation on a three-staff system. The top staff contains a melody. The middle staff contains a melody. The bottom staff contains a bass line. There are some handwritten annotations above the staves.

Handwritten musical notation on a three-staff system. The top staff contains a melody. The middle staff contains a melody. The bottom staff contains a bass line. There are some handwritten annotations above the staves.



Handwritten musical notation on a grand staff. The upper staff contains a complex melodic line with many beamed notes. The lower staff contains a simpler line. Below the staves, the lyrics "d h r n a a v d i g p i o" are written.

Handwritten musical notation on a grand staff. The upper staff contains a complex melodic line. The lower staff contains a simpler line. Below the staves, the lyrics "l v k v h r m h - p l v h r m h p" are written.

Handwritten musical notation on a grand staff. The upper staff contains a complex melodic line. The lower staff contains a simpler line. Below the staves, the lyrics "l v h r m h p m h p o p / m m h p o p / m" are written.

Handwritten musical notation on a grand staff. The upper staff contains a complex melodic line. The lower staff contains a simpler line. Below the staves, the lyrics "d h r n a" are written.

Handwritten musical notation on a grand staff. The upper staff contains a complex melodic line. The lower staff contains a simpler line. Below the staves, the lyrics "d h r n a" are written.

Handwritten musical notation on a grand staff. The upper staff contains a complex melodic line. The lower staff contains a simpler line. Below the staves, the lyrics "a v d i g p i o l v h r m" are written.

Handwritten musical notation on a grand staff. The upper staff contains a complex melodic line. The lower staff contains a simpler line. Below the staves, the lyrics "v d a l v d g l o - d m e" are written.

Handwritten musical notation on a grand staff. The upper staff contains a complex melodic line. The lower staff contains a simpler line. Below the staves, the lyrics "h p l v h r m p m" are written.

Handwritten musical notation on a grand staff. The upper staff contains a complex melodic line. The lower staff contains a simpler line. Below the staves, the lyrics "m t m t o b / n f o m t m t o b i n" are written.